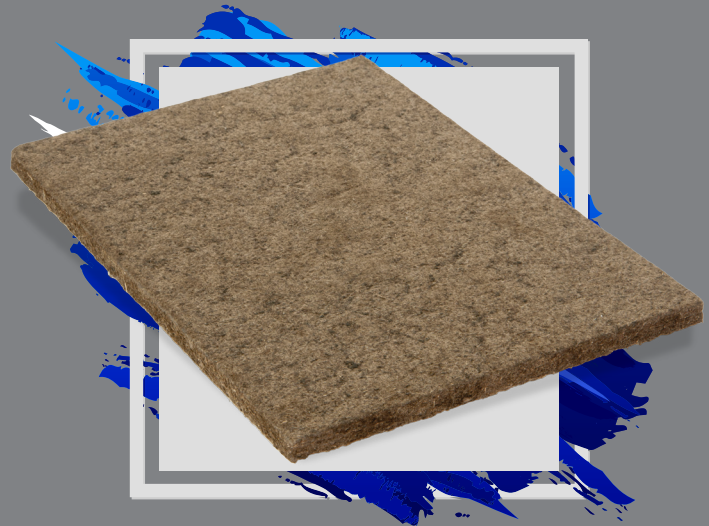


Infrastructure – Water Proofing Stage

BITUMINOUS BOARDS



PRODUCT DESCRIPTION

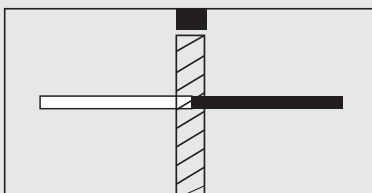
UNITECH Filler Boards is manufactured from highly resilient softwood fibers coated with bitumen. Filler Boards are dry and clean, and cannot extrude any form of staining matter. They are resistant to moisture penetration and ice formation in the joint. They are immune to dry and wet rot, fungus and most forms of insect attack or similar forms of deterioration.

They completely fills joints under repeated cycles of expansion and contraction with minimum extrusion. They are also a good insulating vapor barrier which is easily handled without breakage.

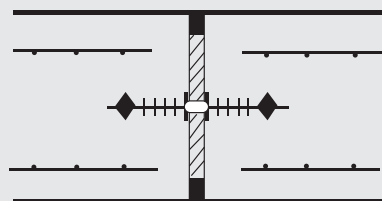


BASIC USE

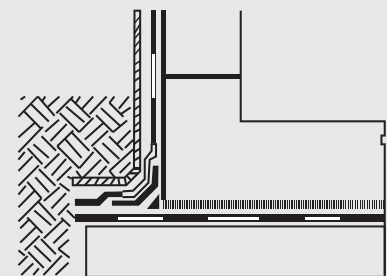
UNITECH Filler Boards are designed as a standard, Low cost, pre-moulded joint filler for expansion joints in civil engineering and building construction works of all types. The main uses for Bituboard in the construction industry are: roads, bridges, runways, pedestrian areas, basements, retaining walls and site slabs.



Expansion Joint Concrete Slabs



Expansion Joint in Vertical Walls



Protection to Waterproofing Membranes

PROTECTION WORK

UNITECH Filler Boards are recommended for the protection of different materials, particularly waterproofing below-grade where abrasive and sharp backfill material could puncture or otherwise damage the waterproofing.



BITUMINOUS BOARDS

TECHNICAL SPECIFICATIONS

Specification	Unit of Measurement	Value for Nominal Thickness in mm			
		9.5 & 10	12 & 12.5	18 - 20	24 - 25
Density of dry board	kg/m ³	296	28.1	252	262
	lb/ft ³	18.5	17.5	15.7	16.3
2h volume water absorption	%	4.1	3.4	1.9	1.6
24h volume water absorption	%	20	18	8	7
Moisture content	%	5.4	5.2	5.7	5.3
Asphalt content	%	10	10	10	10
Linear variation with change in moisture content	%	0.13	0.11	0.11	0.10
Compression	mm	0.21	0.48	0.38	0.47
	in	0.008	0.019	0.015	0.018

* 20% Bitumen content is also available

* 35% Bitumen content is also available

TYPICAL PERFORMANCE CHARACTERISTICS

Properties	Test Method																
Extrusion under Compression	<1mm																
Application Temperature	-25°C to 80°C																
Weather Resistance	-40°C to 130°C under normal usage																
Shelf Period	> 2 years																
Storage Requirements	Store flat, preferably under cover																
Flash Point	>200°C																
Flammability	Will burn slowly, does not support spread of flames																
Toxicity	Non toxic under normal conditions of use																
Chemical Resistance	<table border="0"> <tr> <td>Dilute acids</td> <td>-Excellent</td> </tr> <tr> <td>Dilute alkalis</td> <td>-Excellent</td> </tr> <tr> <td>Aliphatic hydrocarbons</td> <td>-Fair</td> </tr> <tr> <td>Aromatic hydrocarbons</td> <td>-Fair</td> </tr> <tr> <td>Chlorinated solvents</td> <td>-Fair</td> </tr> <tr> <td>Salt solutions</td> <td>-Excellent</td> </tr> <tr> <td>Detergent solutions</td> <td>-Excellent</td> </tr> <tr> <td>Water</td> <td>-Excellent</td> </tr> </table>	Dilute acids	-Excellent	Dilute alkalis	-Excellent	Aliphatic hydrocarbons	-Fair	Aromatic hydrocarbons	-Fair	Chlorinated solvents	-Fair	Salt solutions	-Excellent	Detergent solutions	-Excellent	Water	-Excellent
Dilute acids	-Excellent																
Dilute alkalis	-Excellent																
Aliphatic hydrocarbons	-Fair																
Aromatic hydrocarbons	-Fair																
Chlorinated solvents	-Fair																
Salt solutions	-Excellent																
Detergent solutions	-Excellent																
Water	-Excellent																
Shrinkage Factor	<0.5%																
Specification Compliance	ASTM D IS175-83 & BS 1142:1989 AASHTO M 213 Corps of Engineers CRD-C 508 Federal Specification HH-F-341 F, type I																

LOCATION

Al Waab City – Salwa Road, 1st Floor, Office No.A, Above HSBC Bank
P.O. Box: 23910 Doha-Qatar
Phone: Tel : +974 4451 3301/02/03
Fax: +974 4451 3305
Email: contact@unitech-qatar.com

